

■ The Duct Connection has one of the largest inventories of in-stock spiral pipe and fittings ready for prompt delivery.





About The Duct Connection

Since 1983, The Duct Connection has provided sheet metal contractors with the best welded and spiral pipe products in the industry. We've built our reputation one customer at a time by focusing on customer satisfaction, quality, service, and reliability.

Need it fast? With more than 100,000 square feet of manufacturing area and 40,000 square feet of storage area, we have one of the largest inventories of in-stock spiral pipe and fittings ready for immediate delivery. We also stock a broad range of materials available in a wide variety of gauges and sizes so that your special requirements are routine to us.



Have special requirements? No problem. Our modern fabrication facility with state-of-the-art equipment can turn around even the largest orders quickly and accurately. It often takes longer to ship an order to a job site than it does for us to fabricate it.



From start to finish... The Duct Connection is your one source for:

- Spiral Seam Pipe and Fittings
- Welded Pipe and Fittings
- Round Pipe and Fittings
- Flat Oval Pipe and Fittings
- Rectangular Duct and Fittings



To place an order or to obtain a same-day quote, call 301-350-7904 or fax your specifications to 301-350-7906 and a sales representative will contact you.

Table of Contents

Spiral Pipe	2
Elbows (Galvanized/Galvaneal)	
90 Degree	3
45 Degree	3
Elbows (Stainless Steel, PVC and Aluminum)	
90 Degree	4
45 Degree	4
Round Reducer	5
Tee Fittings	6
Swedged Saddle Taps	
90 Degree	7
45 Degree	8
Takeoffs	9
End Caps	10
Couplings	
Female	11
Male	11
Round Duct Hangers	12
Volume Dampers	Inside Back Cover

Spiral Pipe

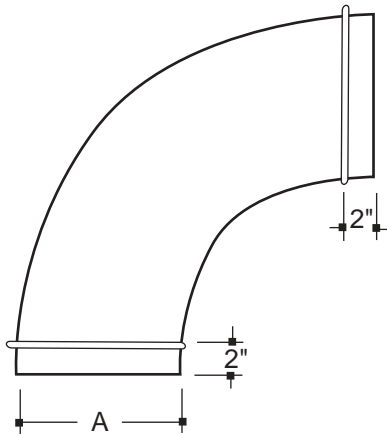
You can depend on us for same-day quotes, competitive pricing, complete and accurate orders, prompt delivery, and much more!

Spiral Pipe Diameter	Length	Gauge	Shipping Wgt./Lbs.	Corrugation
3	120	26	8.0	Non-Corrugated
4	120	"	11.2	"
5	120	"	13.1	"
6	120	"	16.0	"
7	120	"	19.2	"
8	120	"	21.3	"
9	120	"	26.2	"
10	120	"	28.1	"
12	120	"	34.3	"
14	120	"	37.2	Corrugated
16	120	24	54.1	"
18	120	"	61.0	"
20	120	"	68.1	"
22	120	"	75.4	"
24	120	"	82.1	"

Gauges in compliance with 1995 SMACNA 10" w.g. Positive.

Corrugation provided for added rigidity. Helps maintain roundness and prevents damage during handling.

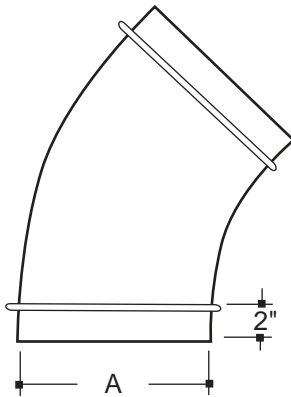
Galvanized/Galvaneal 90 Degree Elbows



Centerline Radius
Equal to 1-1/2 times diameter

Nominal Diameter	Actual Diameter	Gauge	Galvanized	Galvaneal	Shipping Wgt./Lbs.
4	3.91	24	✓	✓	1.6
5	4.91	"	✓	✓	1.9
6	5.91	"	✓	✓	3.0
7	6.91	"	✓	✓	3.6
8	7.91	"	✓	✓	5.2
9	8.91	"	✓	✓	8.3
10	9.91	"	✓	✓	10.4
12	11.91	"	✓	✓	14.1
14	13.91	"	✓	✓	16.1
16	15.88	22	✓	✓	21.8
18	17.88	"	✓	✗	26.9
20	19.88	"	✓	✗	32.6
22	21.88	"	✓	✗	43.7
24	23.88	"	✓	✗	51.4

Galvanized/Galvaneal 45 Degree Elbows



Centerline Radius
Equal to 1-1/2 times diameter

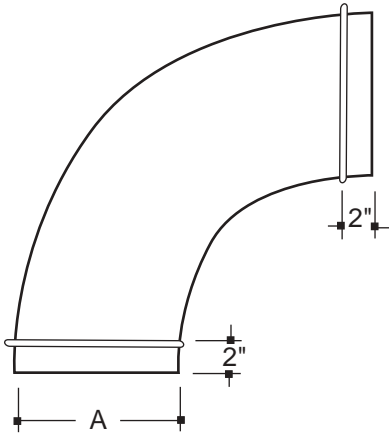
Nominal Diameter	Actual Diameter	Gauge	Galvanized	Galvaneal	Shipping Wgt./Lbs.
4	3.91	24	✓	✓	0.8
5	4.91	"	✓	✓	1.0
6	5.91	"	✓	✓	1.5
7	6.91	"	✓	✓	1.8
8	7.91	"	✓	✓	2.6
9	8.91	"	✓	✓	4.3
10	9.91	"	✓	✓	5.2
12	11.91	"	✓	✓	7.1
14	13.91	"	✓	✓	8.1
16	15.88	22	✓	✓	10.9
18	17.88	"	✓	✗	13.5
20	19.88	"	✓	✗	16.3
22	21.88	"	✓	✗	21.9
24	23.88	"	✓	✗	25.7

Call toll-free today...
1-888-414-4832.
To make the right connection!

Gauges in compliance with 1995 SMACNA 10" w.g. Positive.

✓ Indicates products in stock. ✗ Indicates products to be fabricated as required.

Stainless Steel, PVC & Aluminum 90 Degree Elbows

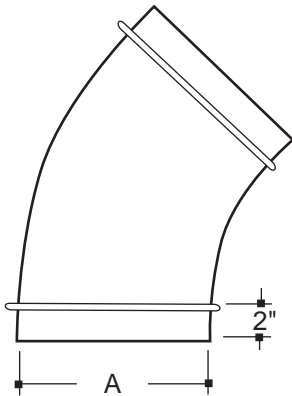


Centerline Radius
Equal to 1-1/2 times diameter

Nominal Diameter	Actual Diameter	St. Steel Type 316	PVC 4x4 Coated	Alum.	St.St. & PVC Wgt./Lbs.	Aluminum Wgt./Lbs.
4	3.91	22 Ga.	22 Ga.	0.040	1.6	0.7
5	4.91	22 Ga.	22 Ga.	0.040	1.9	1.0
6	5.91	22 Ga.	22 Ga.	0.040	3.0	1.4
7	6.91	22 Ga.	22 Ga.	0.040	3.6	2.0
8	7.91	22 Ga.	22 Ga.	0.040	5.2	3.0
9	8.91	22 Ga.	22 Ga.	0.040	8.3	3.8
10	9.91	22 Ga.	22 Ga.	0.040	10.4	5.0
12	11.91	22 Ga.	22 Ga.	0.040	14.1	7.5

Gauges in compliance with 1995 SMACNA 10" w.g. Positive.

Stainless Steel, PVC & Aluminum 45 Degree Elbows



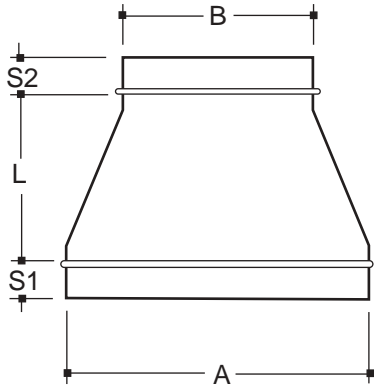
Centerline Radius
Equal to 1-1/2 times diameter

Nominal Diameter	Actual Diameter	St. Steel Type 316	PVC 4x4 Coated	Alum.	St.St. & PVC Wgt./Lbs.	Aluminum Wgt./Lbs.
4	3.91	22 Ga.	22 Ga.	0.040	1.3	0.6
5	4.91	22 Ga.	22 Ga.	0.040	1.4	0.6
6	5.91	22 Ga.	22 Ga.	0.040	2.4	1.0
7	6.91	22 Ga.	22 Ga.	0.040	2.5	1.1
8	7.91	22 Ga.	22 Ga.	0.040	3.5	1.4
9	8.91	22 Ga.	22 Ga.	0.040	4.5	2.8
10	9.91	22 Ga.	22 Ga.	0.040	5.6	3.8
12	11.91	22 Ga.	22 Ga.	0.040	8.8	4.9
14	13.91	22 Ga.	22 Ga.	0.040	12.1	6.5

Gauges in compliance with 1995 SMACNA 10" w.g. Positive.

Have special requirements?
No Problem! Call today...
1-888-414-4832.

Round Reducer



$L = (A - B) + 3$

5" Minimum - 12" Maximum

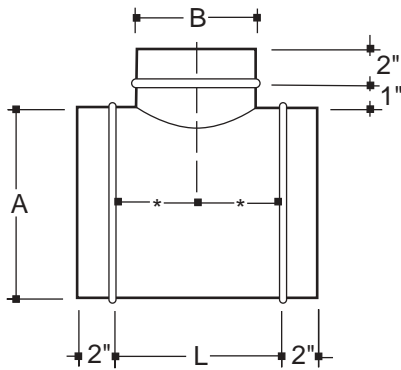
Nom. Dia. "A" End	Nom. Dia. "B" End	Gauge	Weight Lbs.	Nom. Dia. "A" End	Nom. Dia. "B" End	Gauge	Weight Lbs.
5	4	24	1.5	14	6	24	4.2
6	4	"	1.8	14	8	"	4.2
6	5	"	1.8	14	10	"	4.2
7	5	"	2.1	14	12	"	4.2
7	6	"	2.1	16	8	22	6.0
8	4	"	2.4	16	10	"	6.0
8	5	"	2.4	16	12	"	6.0
8	6	"	2.4	16	14	"	6.0
8	7	"	2.4	18	10	"	6.7
9	5	"	2.7	18	12	"	6.7
9	6	"	2.7	18	14	"	6.7
9	7	"	2.7	18	16	"	6.7
9	8	"	2.7	20	12	"	7.4
10	4	"	3.0	20	14	"	7.4
10	5	"	3.0	20	16	"	7.4
10	6	"	3.0	20	18	"	7.4
10	7	"	3.0	22	14	"	8.2
10	8	"	3.0	22	16	"	8.2
10	9	"	3.0	22	18	"	8.2
12	6	"	3.6	22	20	"	8.2
12	7	"	3.6	24	16	"	8.9
12	8	"	3.6	24	18	"	8.9
12	9	"	3.6	24	20	"	8.9
12	10	"	3.6	24	22	"	8.9

Gauges in compliance with 1995 SMACNA 10" w.g. Positive.

Actual diameter is .09" diameter smaller than Nominal (Nom.) diameter for 24 gauge and .12" diameter smaller than 22 gauge. (Example: 4" nominal = 3.91" actual)

Your one source for a complete selection of pipe and fittings -- in stock and ready for immediate delivery!

Tee Fittings



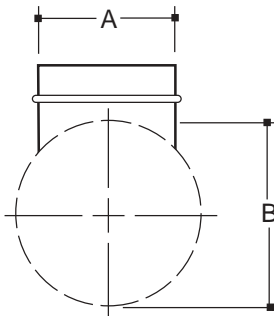
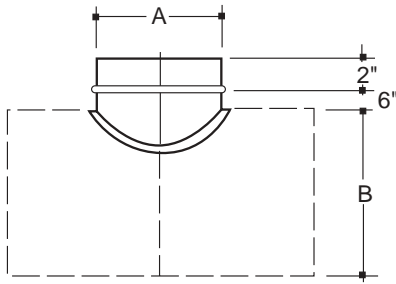
Nominal Dia. "A" End	Nominal Dia. "B" End	Length	Gauge	Seam	Shipping Wgt./Lbs.
4	4	8	24	Stitch Weld	1.8
5	4	8	24	"	2.1
5	5	9	24	"	2.4
6	4	8	24	"	2.5
6	5	9	24	"	2.8
6	6	10	24	"	3.1
8	6	10	24	"	4.0
8	8	12	24	"	4.8
10	6	10	24	"	4.9
10	8	12	24	"	5.9
10	10	14	24	"	6.8
12	6	10	24	"	5.8
12	8	12	24	"	6.9
12	10	14	24	"	8.0
12	12	16	24	"	9.1
14	6	10	24	"	6.7
14	8	12	24	"	8.0
14	10	14	24	"	9.2
14	12	16	24	"	10.5
14	14	18	24	"	11.7
16	6	10	22	"	10.1
16	8	12	22	"	12.0
16	10	14	22	"	13.9
16	12	16	22	"	15.8
16	16	20	22	"	19.5
18	6	10	22	"	11.3
18	8	12	22	"	13.4
18	10	14	22	"	15.5
18	12	16	22	"	17.6
18	18	22	22	"	23.9

You can depend on us for same-day quotes, competitive pricing, complete and accurate orders, prompt delivery, and much more!

Gauges in compliance with 1995 SMACNA 10" w.g. Positive.

Actual diameter is .09" diameter smaller than Nominal diameter for 24 gauge and .12" diameter smaller than 22 gauge. (Example: 4" nominal = 3.91" actual)

Swedged Saddle Taps 90 Degree

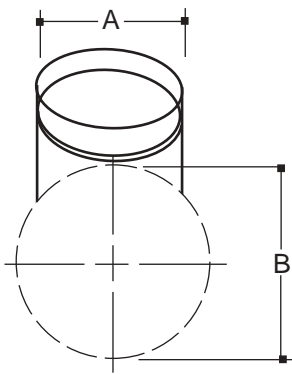
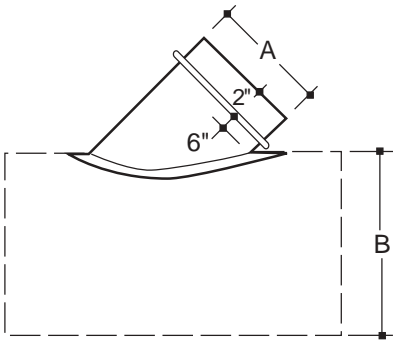


Nom. Dia. "A" End	Nom. Dia. "B" End	Gauge	Weight Lbs.	Nom. Dia. "A" End	Nom. Dia. "B" End	Gauge	Weight Lbs.
4	4	24	1.2	10	14	24	3.0
4	5	"	1.2	10	16	"	3.0
4	6	"	1.2	10	18	"	3.0
4	8	"	1.2	10	20	"	3.0
4	10	"	1.2	10	22	"	3.0
4	12	"	1.2	10	24	"	3.0
4	14	"	1.2	12	12	"	3.6
5	5	"	1.5	12	14	"	3.6
5	6	"	1.5	12	16	"	3.6
6	6	"	1.8	12	18	"	3.6
6	8	"	1.8	12	20	"	3.6
6	10	"	1.8	12	22	"	3.6
6	12	"	1.8	12	24	"	3.6
6	14	"	1.8	14	14	"	4.2
6	16	"	1.8	14	16	"	4.2
6	18	"	1.8	14	18	"	4.2
6	20	"	1.8	14	20	"	4.2
6	22	"	1.8	14	22	"	4.2
6	24	"	1.8	14	24	"	4.2
8	8	"	2.4	16	16	22	5.9
8	10	"	2.4	16	18	"	5.9
8	12	"	2.4	16	20	"	5.9
8	14	"	2.4	16	22	"	5.9
8	16	"	2.4	16	24	"	5.9
8	18	"	2.4	18	18	"	6.6
8	20	"	2.4	18	20	"	6.6
8	22	"	2.4	18	22	"	6.6
8	24	"	2.4	18	24	"	6.6
10	10	"	3.0	20	22	"	7.3
10	12	"	3.0	20	24	"	7.3
				22	24	"	8.1

Call toll-free today...
 1-888-414-4832.
 To make the right
 connection!

Gauges in compliance with 1995 SMACNA 10" w.g. Positive.
 Actual diameter is .09" diameter smaller than Nominal (Nom.) diameter for 24 gauge and
 .12" diameter smaller than 22 gauge. (Example: 4" nominal = 3.91" actual)

Swedged Saddle Taps 45 Degree



Nom. Dia. "A" End	Nom. Dia. "B" End	Gauge	Weight Lbs.	Nom. Dia. "A" End	Nom. Dia. "B" End	Gauge	Weight Lbs.
4	4	24	1.2	10	14	24	3.0
4	5	"	1.2	10	16	"	3.0
4	6	"	1.2	10	18	"	3.0
4	8	"	1.2	10	20	"	3.0
4	10	"	1.2	10	22	"	3.0
4	12	"	1.2	10	24	"	3.0
4	14	"	1.2	12	12	"	3.6
5	5	"	1.5	12	14	"	3.6
5	6	"	1.5	12	16	"	3.6
6	6	"	1.8	12	18	"	3.6
6	8	"	1.8	12	20	"	3.6
6	10	"	1.8	12	22	"	3.6
6	12	"	1.8	12	24	"	3.6
6	14	"	1.8	14	14	"	4.2
6	16	"	1.8	14	16	"	4.2
6	18	"	1.8	14	18	"	4.2
6	20	"	1.8	14	20	"	4.2
6	22	"	1.8	14	22	"	4.2
6	24	"	1.8	14	24	"	4.2
8	8	"	2.4	16	16	22	5.9
8	10	"	2.4	16	18	"	5.9
8	12	"	2.4	16	20	"	5.9
8	14	"	2.4	16	22	"	5.9
8	16	"	2.4	16	24	"	5.9
8	18	"	2.4	18	18	"	6.6
8	20	"	2.4	18	20	"	6.6
8	22	"	2.4	18	22	"	6.6
8	24	"	2.4	18	24	"	6.6
10	10	"	3.0	20	22	"	7.3
10	12	"	3.0	20	24	"	7.3
				22	24	"	8.1

Have special requirements?

No Problem!

Call today...

1-888-414-4832.

Gauges in compliance with 1995 SMACNA 10" w.g. Positive.

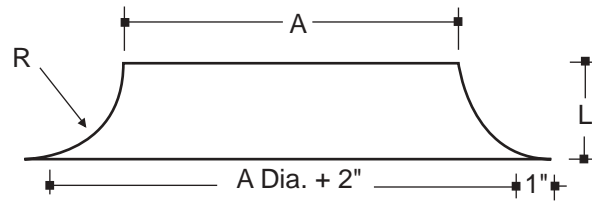
Actual diameter is .09" diameter smaller than Nominal (Nom.) diameter for 24 gauge and .12" diameter smaller than 22 gauge. (Example: 4" nominal = 3.91" actual)

Your one source for a complete selection of pipe and fittings -- in stock and ready for immediate delivery!

Nom. Dia. "A"	Actual Dia. "A"	"L"	"R"	Gauge	Shipping Wgt./Lbs.
4	3.88	2"	1"	22	0.4
5	4.88	"	"	"	0.5
6	5.88	"	"	"	0.7
7	6.88	"	"	"	0.8
8	7.88	"	"	"	0.9
9	8.88	"	"	"	1.0
10	9.88	"	"	"	1.1
12	11.88	"	"	"	1.3
14	13.88	"	"	"	1.6
16	15.88	"	"	"	2.0
18	17.88	"	"	"	2.4
20	19.88	"	"	"	2.9
22	21.88	"	"	"	3.4
24	23.88	"	"	"	3.9

Gauges in compliance with 1995 SMACNA 10" w.g. Positive.

For installation on flat surfaces, i.e. rectangular duct.

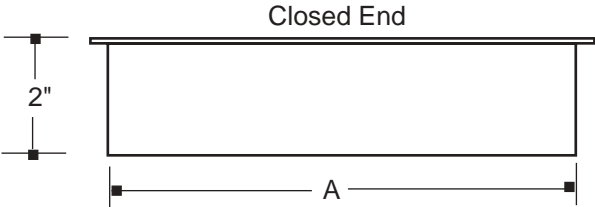


End Caps

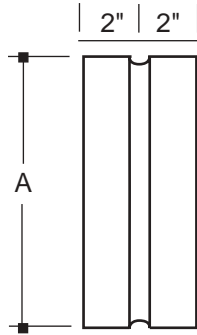
You can depend on us for same-day quotes, competitive pricing, complete and accurate orders, prompt delivery, and much more!

Nominal Dia. "A" End	Actual Dia. "A" End	Gauge	Seam	Shipping Wgt./Lbs.
4	3.91	24	Stitch Weld	0.4
5	4.91	24	"	0.6
6	5.91	24	"	0.7
7	6.91	24	"	0.9
8	7.91	24	"	1.0
9	8.91	24	"	1.2
10	9.91	24	"	1.4
12	11.91	24	"	1.9
14	13.91	24	"	2.4
16	15.88	22	"	3.9
18	17.88	22	"	4.7
20	19.88	22	"	5.6
22	21.88	22	"	6.5
24	23.88	22	"	7.6

Gauges in compliance with 1995 SMACNA 10" w.g. Positive.



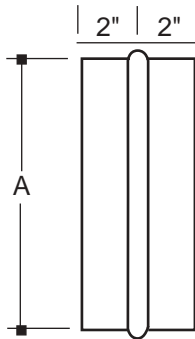
Couplings Female



Nominal Dia. "A" End	Actual Dia. "A" End	Gauge	Seam	Shipping Wgt./Lbs.
4	4	24	Stitch Weld	0.4
5	5	24	"	0.5
6	6	24	"	0.6
7	7	24	"	0.7
8	8	24	"	0.8
9	9	24	"	0.9
10	10	24	"	1.0
12	12	24	"	1.3
14	14	24	"	1.5
16	16	22	"	2.2
18	18	22	"	2.5
20	20	22	"	2.8
22	22	22	"	3.1
24	24	22	"	3.4

Gauges in compliance with 1995 SMACNA 10" w.g. Positive.

Male

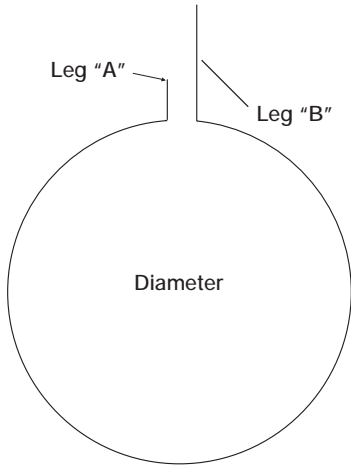


Nominal Dia. "A" End	Actual Dia. "A" End	Gauge	Seam	Shipping Wgt./Lbs.
4	3.91	24	Stitch Weld	0.4
5	4.91	24	"	0.5
6	5.91	24	"	0.6
7	6.91	24	"	0.7
8	7.91	24	"	0.8
9	8.91	24	"	0.9
10	9.91	24	"	1.0
12	11.91	24	"	1.2
14	13.91	24	"	1.5
16	15.88	22	"	2.2
18	17.88	22	"	2.5
20	19.88	22	"	2.8
22	21.88	22	"	3.1
24	23.88	22	"	3.3

Gauges in compliance with 1995 SMACNA 10" w.g. Positive.

Call toll-free today...
1-888-414-4832.
To make the right
connection!

Round Duct Hangers



1" Wide Galvanized Steel Band

Nominal Diameter	Gauge	Leg "A"	Leg "B"	Shipping Wgt./Lbs.
4	20	1"	4"	0.1
5	"	"	"	0.1
6	"	"	"	0.3
7	"	"	"	0.3
8	"	"	"	0.3
9	"	"	"	0.4
10	"	"	"	0.4
12	"	"	"	0.5
14	"	"	"	0.5
16	"	"	"	0.6
18	"	"	"	0.7
20	"	"	"	0.8
22	"	"	"	0.9
24	"	"	"	1.0

Have special requirements?
No Problem! Call today...
1-888-414-4832.

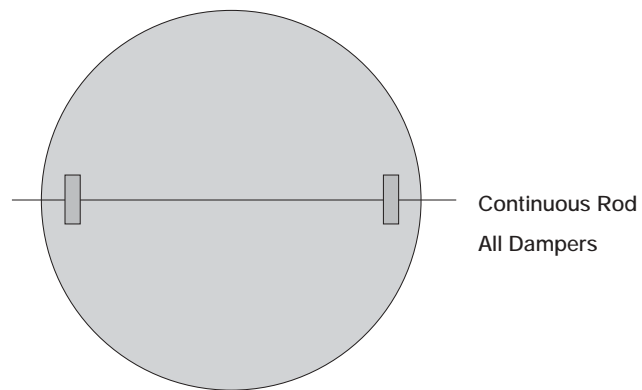
Volume Dampers

■ Your one source for a complete selection of pipe and fittings -- in stock and ready for immediate delivery!

Nominal Diameter	Actual Diameter	Gauge	Regulator Size	Rod/Pin Size	Shipping Wgt./Lbs.
4	3.75	22	1/4"	1/4" Rod	0.1
5	4.75	"	1/4"	1/4" Rod	0.2
6	5.75	"	1/4"	1/4" Rod	0.3
7	6.75	"	1/4"	1/4" Rod	0.4
8	7.75	"	1/4"	1/4" Rod	0.6
9	8.75	"	1/4"	1/4" Rod	0.7
10	9.75	"	1/4"	1/4" Rod	0.9
12	11.75	"	3/8"	3/8" Rod	1.3
14	13.75	"	3/8"	3/8" Rod	1.8
16	15.75	20	3/8"	3/8" Rod	3.1
18	17.75	"	3/8"	3/8" Rod	4.0
20	19.75	"	1/2"	1/2" Rod	4.9
22	21.75	"	1/2"	1/2" Rod	6.0
24	23.75	"	1/2"	1/2" Rod	7.1

All damper hardware extended for insulation standoffs. (Nominal Diameter + 4")

Dampers with 1/2" rod will have "V" groove for rod alignment.



QUALITY • SERVICE • RELIABILITY • SINCE 1983

You Can Depend on The Duct Connection.



Same-day Quotes

Competitive Pricing

Complete & Accurate Orders

Prompt Delivery

and much More!



51 Ritchie Road • Capitol Heights • Maryland 20743

Phone: 301-350-7904 • Fax: 301-350-7906

Toll-Free: 1-888-414-4832